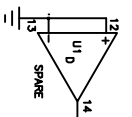


- U1 = TL074 TEXAS INSTRUMENTS QUAD OP-AMP
- U2 = LM3207 NATIONAL MONO BRIDGE 1024 STAGE
- U3 = LM3207 NATIONAL DUAL COMPLEMENTARY PAIR PLUS INVERTER
- U4 = CH4047 NATIONAL LOW POWER MONOSTABLE/ASTABLE MULTIVIBRATOR
- U5 = MONLEY # M10-50534-000



<b>MONLEY</b>	
SCALE 1=1	APPROVED BY <i>Scott Steffen</i>
DATE 5-8-96	DESIGNED BY S.F.
CRYSTAL CHORUS BOX (CCB)	
Schmbeck.dwg	
DRAWING NUMBER	